

forestal series 2024

forestal

Since 1960

ZACCARIA
QUALITY TRAILERS



Since 1960

ZACCARIA

QUALITY TRAILERS

2024 RANGE

One- axle trailers



2 – 3 axles trailers



Forestry trailers



Zootechnics trailers



Platforms



Vineyard trailers



Monocoques



Special trailers



- Over 60 years
of experience

- Over 30.000 sold
trailers

- Over 100 models
in production

- 6 EIMA Technical
Innovation prizes



ONE AXLE FORESTRY USE TRAILERS

Standard equipment:

Trilateral tipping.

Driving axle.

6 studs differential on ZAM 50 Forestal model.

Oversized 8 studs differential on ZAM 60-70 models.

Front protection grill. Cardan shaft and gearbox.

N.4 rear pole-holder tubes inner side:

diam.75 on ZAM 50 Forestal; diam.90 on ZAM 60 and 70 Forestal.

Front crane application set-up and approval.

Up-chequered metal-sheet floor.

Rear columns.

Downwards/upwards opening of the rear side.

Manual parking stand.

Extension sides attachments.

Optional:

Oversized wheels.

Tubes for poles.

Log support poles.

Hydraulic parking stand.

Special gearbox for crane gear pump operation.

Gearbox disengagement with hydraulic command.

Extension sides.

Comas sides.

Steering drawbar with hydraulic command on ZAM 60-70 Forestal.

ZAM 60 FORESTAL with net extension sides.

ZAM 60 FORESTAL
with Comas sides.



MODEL	BODY DIMENSIONS cm.	GROSS WEIGHT Tons	TARE Tons	TIRES	FLOOR HEIGHT cm.	BRAKE	TIPPING
ZAM 50 Forestal	300 x 185 x 50	6	1,35	11.5/80 - 15.3 New On demand: 36x11 retreated	92	Hydraulic	Trilateral
ZAM 60 Forestal	350 x 200 x 50	6	1,7	14-17,5 new On demand: 385/55 R19,5 retreated	95	Hydraulic	
ZAM 70 Forestal	400 x 220 x 50	6	2	15-19,5 New On demand: 385/55 R19,5 retreated	110 100	Hydraulic	



ZAM 140 FORESTAL TC



TWO AXLES TRAILERS LOGS TRANSPORT

Standard equipment:

Fixed floor, with 6 moulded transoms with poles
H 1,50 mt with fixing screw to support logs.

8 studs front driving axle.

8 studs rear steering axle.

Front protection grill.

Cardan shaft and gearbox.

Front crane application set-up and approval.

Manual parking stand.

Optional:

Hydraulic parking stand.

Special gearbox for crane gear pump operation.

Hydraulic lifting of the rear axle with double effect piston

Steering drawbar with hydraulic command.

Gearbox disengagement with hydraulic command.

Pole-holder transoms with additional poles.

Metal-sheet wheel-cover.

Rear extension with hydraulic extension 1 mt. and

n.2 pole-holder transoms with poles H mt. 1,50.

On demand, HYDRAULIC TRACTION. Only on ZAM 140 models, with 385/65 R22,5 tires.

MODEL	BODY DIMENSIONS cm.	GROSS WEIGHT Tons	TARE (WITHOUT THE CRANE) Tons	SUSPENSIONS	TIRES	FLOOR HEIGHT cm.	BRAKE
ZAM 110 Forestal T	400x200	1,1	2,3	Cantilever Leaf spring	385/55 R19,5 retreated <i>on demand 14-17,5 new</i>	85	Hydraulic or pneumatic
ZAM 140 Forestal TC	430x210	1,4	3		385/65 R22,5 Flotation new <i>on demand 15-19,5 new</i>	95	
ZAM 140 Forestal TL	470x210	1,4	3,4			90	

forestal

TWO AXLES TRAILERS LOGS TRANSPORT



ZAM 140 FORESTAL TC SUPER

Equipped with independent hydraulic suspensions. Transverse and independent oscillation of the axles.
High disequilibrium of the suspensions 24 cm : 12+12

Standard equipment:

Fixed floor, with 6 moulded transoms with poles
H 1,50 mt with fixing screw to support logs.

8 studs front driving axle.

8 studs rear steering axle.

Front protection grill.

Cardan shaft and gearbox.

Front crane application set-up and approval.

Manual parking stand.

Independent hydraulic suspensions.

Optional:

Hydraulic parking stand.

Special gearbox for crane gear pump operation.

Hydraulic lifting of the rear axle with double effect piston.

Steering drawbar with hydraulic command.

Gearbox disengagement with hydraulic command.

Pole-holder transoms with additional poles.

Metal-sheet wheel-cover.

Rear placement of the crane, on the hydraulic extension.

Rear extension with hydraulic extension 1 mt. and

n.2 pole-holder transoms with poles H mt. 1,50.

Manual loading levelling system.

Hydraulic traction.

MODEL	BODY DIMENSIONS cm.	GROSS WEIGHT Tons	TARE (WITHOUT THE CRANE) Tons	SUSPENSIONS	TIRES	FLOOR HEIGHT cm.	BRAKE
ZAM 110 Forestal T Super	400x225	11	2,5	Hydraulic Independent	385/65 R22,5 Flotation new on demand 15-19,5 new	100	Hydraulic or pneumatic
ZAM 140 Forestal TC Super	430x230	14	3,1				
ZAM 140 Forestal TL Super	470x230	14	3,5				

forestal

TWO AXLES TRAILERS 11 Tons series

ZAM 110
FORESTAL



On demand: Hydraulic traction.

Standard equipment:

Trilateral tipping.
8 studs front driving axle.
8 studs rear self-steering axle.
Up-chequered metal-sheet floor.
Extension sides attachments.
Manual parking stand.
Front protection grill. Cardan shaft and gearbox.
N.4 rear pole-holder tubes inner side diam.90.
N.4 lateral pole-holder tubes.
Front crane application set-up and approval.

Optional:

Hydraulic parking stand.
Toolbox.
Special gearbox for crane gear pump operation.
Hydraulic lifting of the rear axle.
Steering drawbar with hydraulic command.
Gearbox disengagement with hydraulic command.
Log support poles with fixing screw.
Extension sides.
Comas sides.
Lateral sides divided in halves.
Professional equipment.

MODEL	BODY DIMENSIONS cm.	GROSS WEIGHT Tons	TARE (WITHOUT THE CRANE) Tons	SUSPENSIONS	TIRES	FLOOR HEIGHT cm.	BRAKE	TIPPING
ZAM 110 Forestal S	400x200X50	11	2,7	Cantilever Leaf spring	385/55R19,5retreated or On demand: 14-17,5 new	102	Hydraulic or pneumatic	Trilateral
ZAM 110 FORESTAL L	400x210X50	11	3		385/65-22,5 Flotation new On demand: 15-19,5new	110		

**ON DEMAND:
HYDRAULIC TRACTION
(only on one axle)**

forestal

ZAM 110
FORESTAL SUPER



On demand: Hydraulic traction.

NEW ON DEMAND:
Manual loading levelling system

TWO AXLES TRAILERS 11 Tons series

Standard equipment:

- Hydraulic trilateral tipping.
- 8 studs front driving axle.**
- 8 studs rear self-steering axle.**
- Independent hydraulic suspensions.
- Transverse and independent oscillation of the axles.
- High disequilibrium of the suspensions (24 cm – 12+12).
- Smooth Domex floor.
- Rear columns and downwards/upwards opening of the rear side.
- Extension sides attachments.
- Manual parking stand.
- Front protection grill. Cardan shaft and gearbox.
- N.4 rear pole-holder tubes inner side diam.90.
- N.4 lateral pole-holder tubes.
- Front crane application set-up and approval.**

Optional:

- Hydraulic parking stand.
- Toolbox.
- Special gearbox for crane gear pump operation.
- Hydraulic lifting of the rear axle.
- Steering drawbar with hydraulic command.
- Gearbox disengagement with hydraulic command.
- Log support poles with fixing screw.
- Extension sides.
- Comas sides.
- Lateral sides divided in halves.
- Professional equipment.

MODEL	BODY DIMENSIONS cm.	GROSS WEIGHT Tons	TARE (WITHOUT THE CRANE) Tons	SUSPENSIONS	TIRES	FLOOR HEIGHT cm.	BRAKE	TIPPING
ZAM 110 Forestal Super	400x220X50	11	3,3	Hydraulic Independent	385/65 – 22,5 Flotation new On demand: 15 - 19,5 new	118	Hydraulic or pneumatic	Trilateral

ON DEMAND:
HYDRAULIC TRACTION
(only on one axle)

TWO AXLES TRAILERS 14 Tons series



ZAM 140 FORESTAL C
with hydraulic traction

Standard equipment:

- Hydraulic trilateral tipping.
- 8 studs front driving axle.**
- Rear self-steering axle.**
- Up-chequered metal-sheet floor.
- Rear columns and downwards/upwards opening of the rear side.
- Extension sides attachments.
- Front protection grill. Cardan shaft and gearbox.
- N.4 rear pole-holder tubes inner side diam.90.
- N.4 lateral pole-holder tubes.
- Front crane application set-up and approval.**

Optional:

- Hydraulic parking stand.
- Toolbox.
- Special gearbox for crane gear pump operation.
- Hydraulic lifting of the rear axle.
- Steering drawbar with hydraulic command.
- Gearbox disengagement with hydraulic command.
- Log support poles with fixing screw.
- Extension sides.
- Comas sides.
- Lateral sides divided in halves.

MODEL	BODY DIMENSIONS cm.	GROSS WEIGHT Tons	TARE (WITHOUT THE CRANE) Tons	SUSPENSIONS	TIRES	FLOOR HEIGHT cm.	BRAKE	TIPPING
ZAM 140 Forestal C	430x210X60	14	3,6	Cantilever Leaf spring	385/65 - 22,5 Flotation new a richiesta: 425/55 R19,5 Ric. 15-19,5 nuovi	120	Hydraulic or pneumatic	Trilateral

ON DEMAND:
PROFESSIONAL EQUIPMENT
Domex floor. Industrial columns.
Pocket sides hinges. Automatic
opening of the rear side.

forestal

TWO AXLES TRAILERS 14 Tons series



ZAM 140 FORESTAL C-SUPER
with hydraulic traction

On ZAM 140 Forestal super
And ZAM 110 Forestal super
as standard equipment:
Independent Hydraulic suspensions.

Transverse and independent oscillation of the
axles, that permits to always maintain the 4 wheels
on the ground. High disequilibrium
of the suspensions (24 cm – 12 + 12)

NEW ON DEMAND:
Manual loading levelling system

ON DEMAND:
PROFESSIONAL EQUIPMENT
Domex floor. Industrial columns.
Pocket sides hinges. Automatic
opening of the rear side.

Standard equipment:

Hydraulic trilateral tipping.
8 studs front driving axle.
Rear self-steering axle.
Smooth Domex floor.
Rear columns and downwards/upwards opening of the rear side.
Extension sides attachments.
Manual parking stand.
Independent hydraulic suspensions.
Front protection grill. Cardan shaft and gearbox.
N.4 rear pole-holder tubes inner side diam.90.
N.4 lateral pole-holder tubes.
Front crane application set-up and approval.

Optional:

Hydraulic parking stand.
Toolbox.
Special gearbox for crane gear pump operation.
Hydraulic lifting of the rear axle.
Steering drawbar with hydraulic command.
Gearbox disengagement with hydraulic command.
Log support poles with fixing screw.
Extension sides.
Comas sides.
Lateral sides divided in halves.



MODEL	BODY DIMENSIONS cm.	GROSS WEIGHT Tons	TARE (WITHOUT THE CRANE) Tons	SUSPENSIONS	TIRES	FLOOR HEIGHT cm.	BRAKE	TIPPING
ZAM 140 Forestal C Super	430x230X60	14	3,8	Hydraulic Independent	385/65 - 22,5 Flotation new	125	Hydraulic or pneumatic	Trilateral
ZAM 140 Forestal L Super	470x230X60	14	4,1		On demand: 425/55 R19,5 Ric. 15-19,5 nuovi	120 125		

forestal

ZAM 200FORESTAL T

Equipped with EXTE poles



THREE AXLES TRAILERS LOGS TRANSPORT

Standard equipment:

Fixed floor, with 8 moulded transoms with poles
H 1,50 mt with fixing screw to support logs.

Central driving axle.

Front and rear steering axles.

Front protection grill.

Hydraulic parking stand.

Toolbox.

Front crane application set-up and approval.

Optional:

Special gearbox for crane gear pump operation.

Hydraulic lifting of the rear axle with double effect piston

Steering drawbar with hydraulic command.

Gearbox disengagement with hydraulic command.

EXTE aluminium log support poles.

Log support poles with extension H 1,50 + 0,80 mt., with fixing screw.

Rear extension with hydraulic extension 1 mt.

and 2 pole-holder transoms with 1,50 mt. poles.

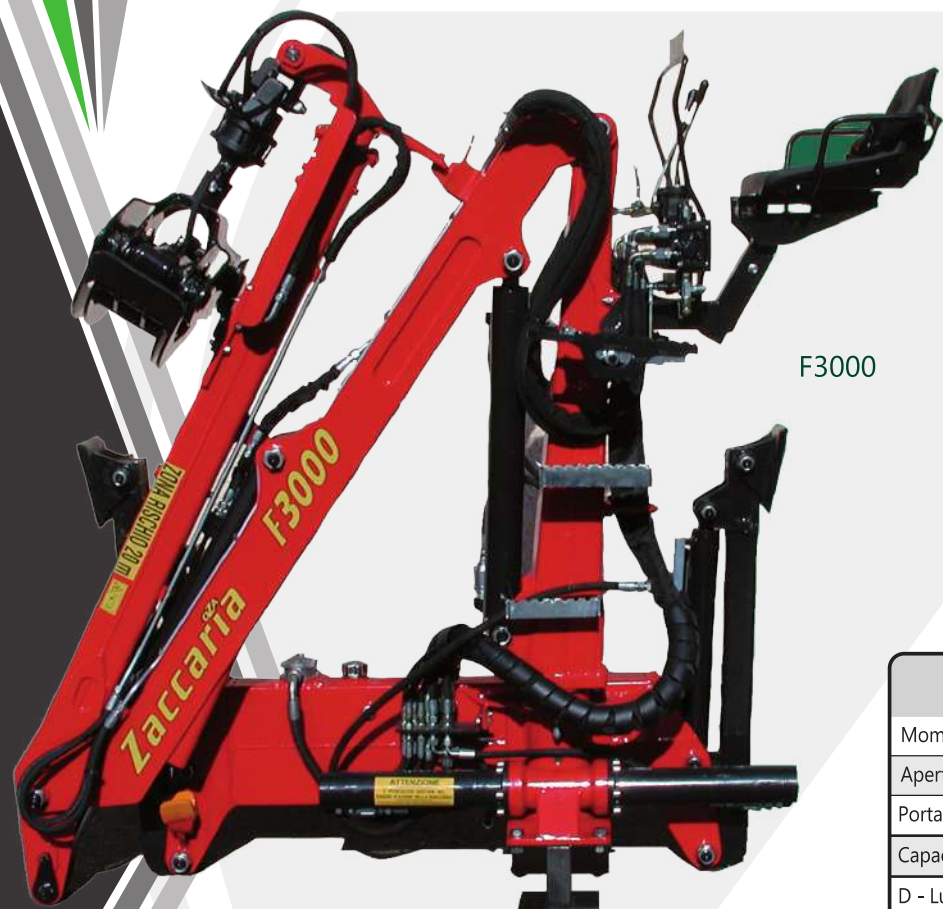
Rear placement of the foldable loader, on the rear extension.

Manual loading levelling system.



MODEL	BODY DIMENSIONS cm.	GROSS WEIGHT Tons	TARE (WITHOUT THE CRANE) Tons	SUSPENSIONS	TIRES	FLOOR HEIGHT cm.	BRAKE
ZAM 200 FORESTAL T	550x250	20	6	Hydraulic	560/45 - R 22,5 nuovi	100	Pneumatic
ZAM 200 FORESTAL I	550x250	20	6	Hydraulic	560/45 - R 22,5 nuovi	100	Idraulica

F3000 - F3500 - F4000



F3000

Standard equipment:

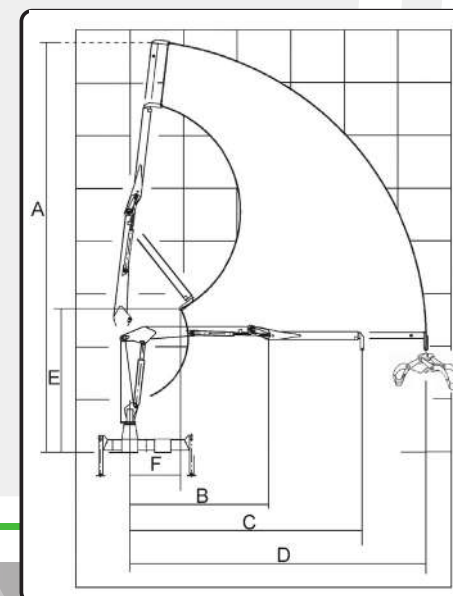
400° rotation and rack return with single cylinder.
Hydraulic telescopic secondary forearm.
Independent hydraulic stabilizers.
360° continuous hydraulic swivel.
Log grapple.

F3000, F3500 e F4000:

Driver's seat on column.
Joystick levers and double pedal.
Industrial pump and oil kit.

TECHNICAL DATA

DESCRIZIONE		F3000	F3500	F4000
Momento massimo di carico	(KNm)	30	31	35
Apertura pinza tronchi	(mm)	1,00	1,20	1,30
Portata girevole	(Kg)	3000	3000	3000
Capacità di alzata a braccio teso con pinza tronchi	(Kg)	350	350	550
D - Lunghezza max con telescopio	(mt)	4,70	6,00	5,00
C - Lunghezza max senza telescopio	(mt)	3,95	4,85	4,10
B - Lunghezza 1°braccio	(mt)	2,10	2,55	2,20
Capacità alzata al 1°braccio	(Kg)	800	900	1200
A - Altezza max con telescopio	(mt)	6,50	7,80	6,75
E - Altezza alla distanza minima di carico	(mt)	2,15	2,40	2,30
F - Distanza all'altezza di carico E	(mt)	1,10	1,10	1,10
Larghezza max con appoggi chiusi	(mt)	1,60	1,90	1,90
Peso gru con pinza tronchi	(Kg)	760	850	1040



F3000 Foldable loader recommended on ZAM 50 Forestal model
F3500 Foldable loader recommended on ZAM 60 Forestal model
F4000 Foldable loader recommended on ZAM 60 Forestal model

Lifting capacities are net and consider the log grapple and rotator installed on the folder.



FORESTRY USE FOLDABLE LOADERS RACK ROTATION WITH CYLINDERS

F5500 - F7500 - F8500

Standard equipment:

400° rotation and rack return with double cylinders.
Driver's seat on column.
Joystick levers and double pedal.
Independent hydraulic stabilizers.
360° continuous hydraulic swivel.
Log grapple.

F5500

Hydraulic telescopic secondary forearm.
Industrial pump kit.

F7500 - F8500:

Double telescopic secondary forearm.
Double piston pump with double circuit.
Hydraulic system cooling with radiator.

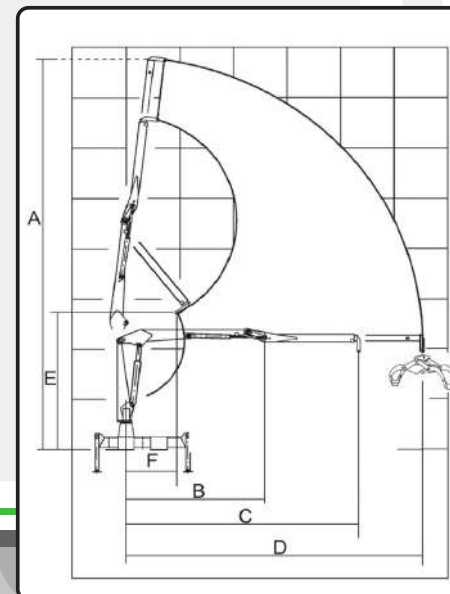
Optional:

Oversized grapple and swivel.
Hydraulically servo-assisted commands.
Vertical hydraulic stabilizers with hydraulic extension.
Remote control with proportional electro-hydraulic distributors.

N.B. Flexible pipes inside the second arm.

TECHNICAL DATA

DESCRIZIONE		F5500	F7500	F8500
Momento massimo di carico	(KNm)	43	62	71
Apertura pinza tronchi	(mm)	1,30	1,50	1,50
Portata girevole	(Kg)	3000	6000	6000
Capacità di alzata a braccio teso con pinza tronchi	(Kg)	500	550	500
D - Lunghezza max con telescopio	(mt)	6,30	7,50	8,60
C - Lunghezza max senza telescopio	(mt)	4,85	5,10	5,50
B - Lunghezza 1°braccio	(mt)	2,55	2,65	2,80
Capacità alzata al 1°braccio	(Kg)	1200	1800	2300
A - Altezza max con telescopio	(mt)	7,85	9,20	1,080
E - Altezza alla distanza minima di carico	(mt)	2,40	2,75	2,80
F - Distanza all'altezza di carico E	(mt)	1,00	1,10	1,10
Larghezza max con appoggi chiusi	(mt)	1,90	2,05	2,20
Peso gru con pinza tronchi	(Kg)	1150	1550	2000



F5500 Foldable loader recommended on ZAM 70-110 Forestal models
F7500 Foldable loader recommended on ZAM 110-140 Forestal models
F8500 Foldable loader recommended on ZAM 140 Forestal models

Lifting capacities are net and consider the log grapple and rotator installed on the folder.

Penz-Austria 4Z - 4ZHL- 6Z - 6ZHL



PENZ-AUSTRIA 4Z

4Z - 4ZHL Foldable loaders recommended on ZAM 70-110 Forestal models
6Z - 6ZHL Foldable loader recommended on ZAM 110-140 Forestal models

Standard equipment:

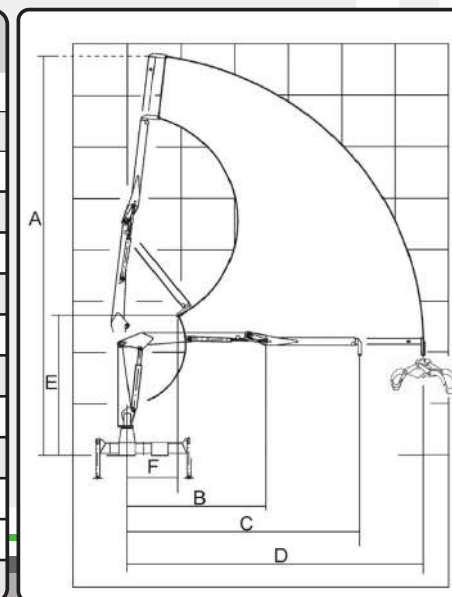
400° rotation and rack return with single cylinder.
Hydraulic telescopic secondary forearm on 4Z – 4ZHL – 6Z models.
Double hydraulic telescopic secondary forearm on 6ZHL model.
Independent hydraulic stabilizers with mechanical extension and in-view rotatable cylinders.
Driver's seat on column.
Joystick levers and double pedal.
Double piston pump with double circuit.
Hydraulic system cooling with radiator.
360° continuous hydraulic swivel.
Log grapple.
LMB shutdown due to overload system.

Optional:

Stabilizers with hydraulic extension.
Oversized grapple and swivel.

TECHNICAL DATA

DESCRIZIONE		4Z	4ZHL	6Z	6ZHL
Momento massimo di carico	(KNm)	40,7	40,7	55	55
Apertura pinza tronchi	(mm)	1,30	1,30	1,50	1,50
Portata girevole	(Kg)	5000	5000	5000	5000
Capacità di alzata a braccio teso con pinza tronchi	(Kg)	550	450	600	400
D - Lunghezza max con telescopio	(mt)	6,00	7,00	7,00	8,50
C - Lunghezza max senza telescopio	(mt)	4,80	5,50	5,50	5,50
B - Lunghezza 1°braccio	(mt)	2,50	2,90	2,90	2,90
Capacità alzata al 1°braccio	(Kg)	1500	1300	2000	1800
A - Altezza max con telescopio	(mt)	8,30	9,20	9,20	10,70
E - Altezza alla distanza minima di carico	(mt)	2,70	2,70	2,70	2,70
F - Distanza all'altezza di carico E	(mt)	1,20	1,30	1,30	1,30
Larghezza max con appoggi chiusi	(mt)	2,00	2,00	2,10	2,10
Peso gru con pinza tronchi	(Kg)	1100	1200	1500	1650



Lifting capacities are net and consider the log grapple and rotator installed on the folder.



ZAM 140 Forestal TL super
Rear foldable loader,
on hydraulic extension.



Our Technical Office utilizes 3D software to design customized "Big Trailers" equipments, operating machines and European or Italian approved special trailers.

All our models can be equipped with:

Hydraulic traction

The system consists of a piston pump with inclined axle, connected to an hydraulic motor with disengagement. All this is mounted on the trailer and it is activated by a cardan shaft. When in use, the traction allows the vehicle to move at A 1-5 Km/h speed and makes possible the ENGAGEMENT-DISENGAGEMENT in motion. A remote control, placed inside the driver's cab, enables the whole operation. The hydraulic traction only works in a forward thrust and allows the driver to change the direction (forward/reverse).

TECHNICAL INFORMATION

- Speed 1-5 Km/h
- Engagement-disengagement whilst moving
- Equipment available for all tractors (even those that don't have a synchronized PTO)
- It can be installed on single or multi- driving axles

On demand:
ENGINE BREAK DEVICE
FOR DOWNHILL ROAD

TECHNICAL INNOVATIONS AWARD  2006

LOG POLES usable on our trailers



Steel poles, 10 mm thick,
from diam. 70 to 90, height 1,50 mt.,
with fixing screw



Steel poles, 10 mm thick, diam. 90,
height 1,50 + 0,80 mt. extension,
with fixing screw



EXTE aluminium poles and extensions.
Height 2,1 + 1,0 mt. Extension

FORESTRY-USE TRAILERS TIRES



10.0/75-15.3
H = 760
L = 250



11.5/80-15.3
H = 860
L = 290



14/17.5
H = 920
L = 350



15/19.5
H = 1020
L = 380



385/55R 19.5 Ric.
H = 920
L = 385



385/65 22.5 Ric. Flotation
H = 1050
L = 385



425/55R 19.5 Ric.
H = 960
L = 425



560/545R 22.5
H = 1080
L = 560

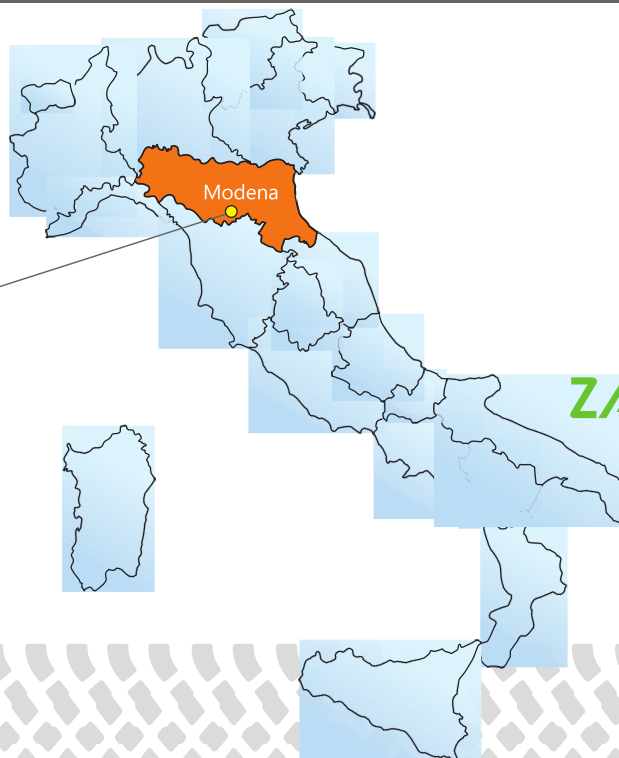
Zaccaria Srl doesn't take on the responsibility of the potential substitution of the below-mentioned tires, due to a lack of stock on the market, or the high rise in the prices, which are, in fact, determined by the producer/supplier.

ZACCARIA

QUALITY TRAILERS



zaccariamorchi.com



ZACCARIA SRL
Via Enrico Fermi, 350
I - 41055 Montese (Modena) - Italy
Tel. +39 (0)59 981750
Fax: +39 (0)59 982353
www.zaccariamorchi.com
info@zaccariamorchi.com



www.facebook.com/zaccariamorchi



www.linkedin.com/company/zaccaria-srl



www.youtube.com/zaccariatrailer

Branches and Warehouses:

I - 41015 Nonantola (Modena)
Via Zuccola, 12 - Italy



scan the QR CODE
to see
our VIDEOS
[zaccaria trailers youtube](https://www.youtube.com/zaccariatrailer)

