

Big trailer series 2024

platforms

Since 1960

**ZACCARIA**  
QUALITY TRAILERS



# platforms 2 axles

## two axles

ZAM 120 A



## two axles platforms

### Standard equipment:

Fixed floor with rear slope.  
Hydraulic ramps mm. 500X2000.  
Adjustable ramps (int.ramps 1050÷650).  
Mechanical ramps supports.  
Leaf spring suspensions.  
Ramps activation lateral distributor.  
N. 8 lashing hooks.

### Optionals:

Front bar for round bales.  
Front bar for bins.  
Metal sheet top on the rear slope.  
Spare wheel with wheel-holder. (Only for twin tires).  
PVC toolbox.  
Straight platform without rear slope and ramps.  
Round bales support poles.  
Patented round bales tying system.  
LED lights.

| MODEL     | DIMENSIONS<br>cm | N° OF<br>AXLES | BRAKE<br>SIZE     | TARE<br>Tons | GROSS W.<br>Tons | TIRES                    | BRAKE     | FLOOR HEIGHT<br>cm |
|-----------|------------------|----------------|-------------------|--------------|------------------|--------------------------|-----------|--------------------|
| ZAM 120 A | 650x255          | 2              | 300x90<br>8 studs | 2,2          | 12               | 215-75 R17.5<br>twin new | Pneumatic | 90                 |
| ZAM 120 B | 650x255          | 2              |                   | 2,2          | 12               |                          | Hydraulic | 90                 |

### STANDARD COLOURS MONOCOLOUR

- RED ZACCARIA
- GREEN ZACCARIA
- GREEN JD ● BLUE NH
- BLACK ● GRAY IC246

### OPTIONALS:

- METALLIC PAINT
- ON DEMAND COLOURS

## two axles close

### TWO AXLES PLATFORM TANDEM 120 SERIES

#### Standard equipment:

Fixed floor with rear slope.  
Hydraulic ramps mm. 500X2000.  
Adjustable ramps (int.ramps 1050÷650).  
Mechanical ramps supports.  
Parabolic leaf spring suspensions.  
Hydraulic parking stand.  
PVC toolbox.  
Ramps activation lateral distributor.  
N. 12 lashing hooks.

#### Optionals:

Front driving axle.  
Front bar for round bales.  
Front bar for bins.  
Metal sheet top on the rear slope.  
Spare wheel with wheel-holder. (Only for twin tires).  
Round bales support poles.  
Patented round bales tying system.  
Steering drawbar with hydraulic command.  
LED lights.

# platforms

## 2 axles

ZAM 120 ARI



| MODEL       | DIMENSIONS<br>cm | N° OF<br>AXLES | BRAKE<br>SIZE     | TARE<br>Tons | GROSS W.<br>Tons | TIRES  | FLOOR<br>HEIGHT<br>cm | BRAKE     |
|-------------|------------------|----------------|-------------------|--------------|------------------|--|-----------------------|-----------|
| ZAM 120 ARP | 650x255          | 2              | 300x90<br>8 studs | 3            | 1,2              | 215/75 R17.5<br>twin used                              | 88                    | Pneumatic |
| ZAM 120 ARI | 650x255          | 2              |                   | 3            | 1,2              | On demand:<br>215/75 R17.5 twin new<br>400/60-15.5 new |                       | Hydraulic |

#### STANDARD COLOURS MONOCOLOUR

● RED ZACCARIA  
● GREEN ZACCARIA  
● GREEN JD ● BLUE NH  
● BLACK ● GRAY IC246

#### OPTIONALS

● METALLIC PAINT  
● ON DEMAND COLOURS



# platforms 2 axles

## two axles

**ZAM 140 B Super**  
Equipped with patented  
round bales tying system



## two axles platforms

### Standard equipment:

- Fixed floor with rear slope.
- Hydraulic ramps mm. 750X2200.
- Adjustable ramps (int.ramps 950÷520).
- Hydraulic support system for ramps while loading.
- Leaf spring suspensions.
- PVC toolbox.
- Automatic brake regulator (with pneumatic brake).
- Ramps activation lateral distributor.
- N. 12 industrial lashing hooks.
- Rear panels and reflective side stripes.

### On demand:

- Front bar for round bales.
- Front bar for bins.
- Metal sheet top on the rear slope.
- Spare wheel with wheel-holder. (Only for twin tires).
- Round bales support poles.
- Patented round bales tying system.
- Ramps distance adjustment with hydraulic command.
- Double ramps mm 750x2200+1200.
- Hydraulic winch.
- LED lights.
- Aluminium hydraulic ramps mm 750x2500.**
- UPN sides without edge.**

### STANDARD COLOURS MONOCOLOUR

- RED ZACCARIA
- GREEN ZACCARIA
- GREEN JD
- BLUE NH
- BLACK
- GRAY IC246

### OPTIONALS

- METALLIC PAINT
- ON DEMAND COLOURS

| MODEL           | DIMENSIONS<br>cm. | N° OF<br>AXLES | BRAKE<br>SIZE     | TARE<br>Tons | GROSS W.<br>Tons | TIRES  | FLOOR HEIGHT<br>cm | BRAKE     |
|-----------------|-------------------|----------------|-------------------|--------------|------------------|--|--------------------|-----------|
| ZAM 140 A SUPER | 800x255           | 2              | 300x90<br>8 studs | 3,8          | 1,4              | 215/75R17,5 twin new<br>On demand:<br>245/70 R17,5 twin new<br>445/45R 19,5 single new | 92                 | Pneumatic |
| ZAM 140 B SUPER | 800x255           | 2              |                   | 3,8          | 1,4              |  | 106                | Hydraulic |

## TWO AXLES PLATFORMS

### Standard equipment:

#### Parabolic leaf springs suspensions.

Fixed floor with rear slope.

Hydraulic ramps mm. 750X2200.

Adjustable ramps (int.ramps 950÷520).

Hydraulic support system for ramps while loading.

PVC toolbox.

Steering adjuster.

Automatic brake regulator.

Industrial lashing hooks.

Rear panels and reflective side stripes.

Lateral lights.

Wheel nut coverings.

Ramps activation lateral distributor.

Fixed drawbar.

Self-adjusting levers.

LED lights.

### Optionals:

Front bar for round bales. Front bar for bins.

Spare wheel with wheel-holder (only for twin tires).

Double ramps mm 750x2200+1200.

**Aluminium hydraulic ramps mm 750x2500.**

**Aluminium double ramps mm 750x2650+950.**

Grating ramps mm 1200x2200.

Double grating ramps mm 1200x2000+1200.

Hydraulic winch.

**UPN sides without edge.**

Patented round bales tying system.

Round bales support poles.

Ramps distance adjustment with hydraulic control.

Hidden rings and hooks for fixing.

**NEW: Hydraulic suspensions.**



### ZAM 180 P11A 80

Equipped with patented round bales tying system.

### NEW

Hydraulic suspensions

### STANDARD COLOURS MONOCOLOUR

● RED ZACCARIA

● GREEN ZACCARIA

● GREEN JD ● BLUE NH

● BLACK

● GRAY IC246

### OPTIONALS

● METALLIC PAINT

● ON DEMAND COLOURS

| MODEL           | DIMENSIONS<br>cm | N° OF<br>AXLES | BRAKE<br>SIZE                           | TARE<br>Tons | GROSS W.<br>Tons | TIRES<br>Standard                | FLOOR HEIGHT<br>cm | TIRES<br>on demand                         | FLOOR HEIGHT<br>cm | SPEED<br>EU approved | BRAKE     |
|-----------------|------------------|----------------|---|--------------|------------------|----------------------------------|--------------------|--|--------------------|----------------------|-----------|
| ZAM 180 P11A 65 | 650x255          | 2              | 300x160<br>10 studs<br>industrial axles | 3,1          | 18               | 245/70 R17,5<br>twin Pirelli new | 98 cm              | 435/50 R19,5 single<br>445/45 R19,5 single | 100 cm<br>100 cm   |                      | Pneumatic |
| ZAM 180 P11A 80 | 800x255          | 2              |   | 3,9          | 18               |                                  |                    |  |                    |                      |           |
| ZAM 180 P11A 93 | 930x255          | 2              |   | 4,5          | 18               |                                  |                    |  |                    |                      |           |

# platforms 2 axles



**ZAM 180 P11B 93 model with double ramps and patented round bales tying system.**



## STANDARD COLOURS MONOCOLOUR

- RED ZACCARIA
- GREEN ZACCARIA
- GREEN JD ● BLUE NH
- BLACK ● GRAY IC246

## OPTIONALS

- METALLIC PAINT
- ON DEMAND COLOURS

## NEW

**Hydraulic suspensions**

## NEW

**A.B.S.** anti-lock braking system

## CARRELLI 2 ASSI

### Dotazioni di serie:

**Parabolic leaf spring suspensions.**  
**Oversized structure for special loads.**

- Fixed floor with rear slope.
- Hydraulic ramps mm. 750X2200.
- Adjustable ramps (int.ramps 950÷520).
- Hydraulic support system for ramps while loading.
- PVC toolbox. Automatic brake regulator.
- Industrial lashing hooks.
- Rear panels and reflective side stripes.
- Lateral lights.
- Oversized industrial rims. Wheel nut coverings.
- Ramps activation lateral distributor.
- Aluminium side underride bars.
- Fixed drawbar. Self-adjusting levers.
- LED lights.

### Optionals:

- Front bar for round bales. Front bar for bins.
- Spare wheel with wheel-holder (only for twin tires).
- Patented round bales tying system with central pole.
- Ramps distance adjustment with hydraulic control.
- Double ramps mm 750x2200+1200.

**Aluminium hydraulic ramps mm 750x2500.**

**Aluminium double ramps mm 750x2650+950.**

Grating ramps mm 1200x2200.

Double grating ramps mm 1200x2000+1200.

Hydraulic winch.

**UPN sides without edge.**

Round bales support poles.

Hidden rings and hooks for fixing.

**Height-adjustable self-supporting frame.**

**NEW: Hydraulic suspensions.**

**NEW: A.B.S. anti-lock braking system.**

| MODEL           | DIMENSIONS<br>cm | N° OF<br>AXLES | BRAKE<br>SIZE       | OPTIONAL<br>BRAKE SIZE | TARE<br>Tons | GROSS W.<br>Tons | TIRES<br>Standard                | FLOOR<br>HEIGHT | TIRES<br>On demand  | FLOOR<br>HEIGHT | SPEED<br>EU approved** | BRAKE     |
|-----------------|------------------|----------------|---------------------|------------------------|--------------|------------------|----------------------------------|-----------------|---------------------|-----------------|------------------------|-----------|
| ZAM 180 P11B 80 | 800x255          | 2              | 300x160<br>10 studs | 310x190<br>10 studs    | 4,3          | 18               | 245/70 R17,5<br>twin Pirelli new | 98 cm           | 435/50 R19,5 single | 100 cm          |                        | Pneumatic |
| ZAM 180 P11B 93 | 930x255          | 2              | industrial<br>axles | industrial<br>axles    | 4,5          | 18               |                                  |                 | 445/45 R19,5 single | 100 cm          |                        |           |

\*\* If permitted by the EU State Traffic Laws.





two axles close

# platforms

## 2 axles

### TWO AXLES PLATFORM TANDEM

#### Standard equipment:

Fixed floor with rear slope.  
Hydraulic ramps mm. 750x2200.  
Adjustable ramps (int.ramps 950÷520).  
Hydraulic support system for ramps while loading.  
Steering rear axle. Leaf spring suspensions.  
PVC toolbox. Automatic brake regulator.  
Nr.12 industrial lashing hooks.  
Rear panels and reflective side stripes.  
Ramps activation lateral distributor.

#### Optionals:

Front driving axle.  
Front bar for round bales. Front bar for bins.  
Steering adjuster. Metal sheet top on the rear slope.  
Spare wheel with wheel-holder (only for twin tires).  
Double ramps mm 750x2200+1200. Wide ramps mm 750x2200 (int.ramps 950÷520)

#### Aluminium hydraulic ramps mm 750x2500.

Hydraulic winch.

#### UPN sides without edge.

Patented round bales tying system. Round bales support poles.  
Ramps distance adjustment with hydraulic control.  
Steering drawbar with hydraulic command.  
Height-adjustable self-supporting frame. LED lights.

**ZAM 140 ARI  
Super**



**ZAM 140 AR - ZAM 140 AR SUPER**  
**TILTING VERSION available**  
**with rear loading board.**

#### STEERING DRAWBAR

##### New optional

Steering drawbar with hydraulic command,  
operated by the tractor distributor. APPROVED.

#### STANDARD COLOURS MONOCOLOUR

- RED ZACCARIA
- GREEN ZACCARIA
- GREEN JD ● BLUE NH
- BLACK ● GRAY IC246

#### OPTIONALS

- METALLIC PAINT
- ON DEMAND COLOURS

| MODEL             | DIMENSIONS<br>cm | N° OF<br>AXLES | BRAKE<br>SIZE     | TARE<br>Tons | GROSS W.<br>Tons | TIRES                                  | FLOOR HEIGHT<br>cm | BRAKE     |
|-------------------|------------------|----------------|-------------------|--------------|------------------|--|--------------------|-----------|
| ZAM 140 ARP       | 650x255          | 2              | 300x90<br>8 studs | 3            | 14               | 215/75 R17,5<br>twin new               | 88                 | Pneumatic |
| ZAM 140 ARI       | 650x255          | 2              |                   | 3            | 14               | On demand:<br>245/70 R17,5<br>twin new | 91                 | Hydraulic |
| ZAM 140 ARP SUPER | 800x255          | 2              |                   | 3,6          | 14               |  | 100                | Pneumatic |
| ZAM 140 ARI SUPER | 800x255          | 2              |                   | 3,6          | 14               | 445/45R 19,5<br>single new             |                    | Hydraulic |

# platforms 2 axles

two axles close



ZAM 180 P02A 80 model  
equipped with patented  
round bales tying system

## STANDARD COLOURS MONOCOLOUR

- RED ZACCARIA
- VERDE ZACCARIA
- GREEN JD ● BLUE NH
- BLACK ● GRAY IC246

## OPTIONALS:

- METALLIC PAINT
- ON DEMAND COLOURS

**NEW**  
Hydraulic suspensions

## TWO AXLES TANDEM PLATFORM

### Standard equipment:

#### Self-steering rear axle.

#### Parabolic leaf spring suspensions.

Fixed floor with rear slope.

Hydraulic ramps mm. 750X2200.

Adjustable ramps (int.ramps 950÷520).

Hydraulic support system for ramps while loading.

PVC toolbox. Hydraulic parking stand.

Automatic brake regulator.

Nr.12 industrial lashing hooks.

Rear panels and reflective side stripes.

Lateral lights. Oversized industrial rims.

Wheel nut coverings.

Ramps activation lateral distributor.

Fixed drawbar. Self-adjusting levers.

LED lights.

### Optionals:

Front bar for round bales.

Front bar for bins.

Spare wheel with wheel-holder (only for twin tires).

Patented round bales tying system.

Round bales support poles.

Ramps distance adjustment with hydraulic control.

Double ramps mm 750x2200+1200.

Aluminium hydraulic ramps mm 750x2500.

Aluminium double ramps mm 750x2650+950.

Grating double ramps mm 1200x2000+1200.

Hydraulic winch.

UPN sides without edge.

Hidden rings and hooks for fixing.

Steering drawbar with hydraulic command.

Height-adjustable self-supporting frame.

NEW: Hydraulic suspensions.

K80 bolted towing hitch.

40 mm bolted towing hitch.

| MODEL           | DIMENSIONS<br>cm | N° OF<br>AXLES | BRAKE<br>SIZE       | TARE<br>Tons | GROSS W.<br>Max tons             | TIRES<br>Standard                | FLOOR<br>HEIGHT | TIRES<br>on demand         | FLOOR<br>HEIGHT | SPEED<br>EU approved | BRAKE     |
|-----------------|------------------|----------------|---------------------|--------------|----------------------------------|----------------------------------|-----------------|----------------------------|-----------------|----------------------|-----------|
| ZAM 180 P02A 65 | 650x255          | 2              | 300x160<br>10 studs | 4            | 18                               | 245/70 R17,5<br>twin Pirelli new | 92 cm           | 435/50 R19,5<br>single new | 100 cm          | 40<br>Km/h           | Pneumatic |
| ZAM 180 P02A 80 | 800x255          | 2              |                     | 4,5          | + vertical<br>load max<br>4 tons |                                  |                 | 445/45 R19,5<br>single new |                 |                      |           |



# platforms 2 axles

two axles close

## TWO AXLES TANDEM PLATFORM

**Standard equipment:**  
Self-steering rear axle.

**Parabolic leaf spring suspensions.**

Fixed floor with rear slope.

Hydraulic ramps mm. 750X2200.

Adjustable ramps (int.ramps 950÷520).

Hydraulic support system for ramps while loading.

PVC toolbox. Hydraulic parking stand.

Steering adjuster. Automatic brake regulator.

Industrial lashing hooks.

Rear panels and reflective side stripes.

Aluminium side underride bars.

Lateral lights. Oversized industrial rims.

Wheel nut coverings. Ramps activation lateral distributor.

Fixed drawbar. Self-adjusting levers. LED lights.

**On demand:**

Front bar for round bales. Front bar for bins.

Spare wheel with wheel-holder (only for twin tires).

Patented round bales tying system. Round bales support poles.

Ramps distance adjustment with hydraulic control.

Double ramps mm 750x2200+1200.

**Aluminium hydraulic ramps mm 750x2500.**

**Aluminium double ramps mm 750x2650+950.**

Grating double ramps mm 1200x2000+1200.

Hydraulic winch.

**UPN side without edge.**

Wooden surface on platform.

Hidden rings and hooks for fixing.

**Steering drawbar with hydraulic command.**

**Height- adjustable self-supporting frame.**

**NEW: Hydraulic suspensions.**

**NEW: A.B.S. anti-lock braking system.**

K80 bolted towing hitch.

40 mm bolted towing hitch.



ZAM 180 P02B model



**NEW**  
**A.B.S.** anti-lock braking system

**NEW**  
**Hydraulic suspensions**

### STANDARD COLOURS MONOCOLOUR

- RED ZACCARIA
- GREEN ZACCARIA
- GREEN JD ● BLUE NH
- BLACK ● GRAY IC246
- ON DEMAND COLOURS

### OPTIONALS

- METALLIC PAINT
- ON DEMAND COLOURS

| MODEL           | DIMENSIONS<br>cm | N° OF<br>AXLES | BRAKE<br>SIZE       | BRAKE<br>SIZE<br>OPTIONAL | TARE<br>Tons | GROSS W.<br>Max Tons                   | TIRES<br>Standard                | FLOOR<br>HEIGHT | TIRES<br>ON DEMAND         | FLOOR<br>HEIGHT | SPEED<br>EU approved** | BRAKE     |
|-----------------|------------------|----------------|---------------------|---------------------------|--------------|--|----------------------------------|-----------------|----------------------------|-----------------|------------------------|-----------|
| ZAM 180 P02B 65 | 650x255          | 2              | 300x160<br>10 studs | 310x190<br>10 studs       | 4,3          | 18<br>+ vertical<br>load max<br>4 tons | 245/70 R17,5<br>twin Pirelli new | 92 cm           | 435/50 R19,5<br>single new | 100 cm          | 60<br>Km/h             | Pneumatic |
| ZAM 180 P02B 80 | 800x255          | 2              | industrial<br>axles | industrial<br>axles       | 4,8          |  |                                  |                 | 445/45 R19,5<br>single new |                 |                        |           |

\*\* If permitted by the EU State Traffic Laws.

# platforms 3 axles



ZAM 270 P03A 98



## STANDARD COLOURS MONOCOLOUR

- RED ZACCARIA
- GREEN ZACCARIA
- GREEN JD ● BLUE NH
- BLACK ● GRAY IC246
- ON DEMAND COLOURS

## OPTIONALS

- METALLIC PAINT
- ON DEMAND COLOURS

**NEW**

**Hydraulic suspensions**

## THREE AXLES CLOSE

### Standard equipment:

Self-steering front and rear axles.

Parabolic leaf spring suspensions.

Fixed floor with rear slope.

Hydraulic ramps mm. 750X2200.

Adjustable ramps (int.ramps 950÷520).

Hydraulic support system for ramps while loading.

PVC toolbox. Hydraulic parking stand.

Steering adjuster. Automatic brake regulator.

Industrial lashing hooks.

Rear panels and reflective side stripes.

Lateral lights. Wheel nut coverings.

Ramps activation lateral distributor.

Fixed drawbar. Self-adjusting levers.

LED lights.

### On demand:

Front bar for round bales.

Front bar for bins.

Spare wheel with wheel-holder (only for twin tires).

Patented round bales tying system. Round bales support poles.

Ramps distance adjustment with hydraulic control.

Double ramps mm 750x2200+1200.

**Aluminium hydraulic ramps mm 750x2500.**

**Aluminium double ramps mm 750x2650+950.**

Grating ramps mmm 1200x2200.

Grating double ramps mm 1200x2000+1200.

Hydraulic winch.

**UPN sides without edge.**


**Steering drawbar with hydraulic command.**

**Height-adjustable self-steering frame.**

**NEW: Hydraulic suspensions.**

Hidden rings and hooks for fixing.K80 bolted towing hitch.

40 mm bolted towing hitch.

| MODEL           | DIMENSIONS<br>cm | N° OF<br>AXLES | BRAKE<br>SIZE                             | TARE<br>Tons | GROSS W.<br>Tons                       | TIRES<br>Standard           | FLOOR<br>HEIGHT | TIRES<br>ON DEMAND                                       | FLOOR<br>HEIGHT | SPEED   | BRAKE     |
|-----------------|------------------|----------------|---|--------------|--|-----------------------------|-----------------|--|-----------------|---|-----------|
| ZAM 270 P03A 70 | 700x255          | 3              | 300x160<br>10 studs<br>industrial<br>axle | 4,7          | 27<br>+ vertical<br>load max<br>4 tons | 245/70 R17,5<br>Pirelli new | 94 cm           | 435/50 R19,5<br>single new<br>445/45 R19,5<br>single new | 102 cm          |  | Pneumatic |
| ZAM 270 P03A 85 | 850x255          | 3              |   | 5,3          |  |                             |                 |  |                 |   |           |
| ZAM 270 P03A 98 | 980x255          | 3              |   | 5,7          |  |                             |                 |  |                 |   |           |



### THREE AXLES CLOSE

#### Standard equipment:

Self-steering front and rear axles.

Parabolic leaf spring suspensions.

Oversized structure for special loads.

Fixed floor with rear slope.

Hydraulic ramps mm. 750X2200. Adjustable ramps (int.ramps 950÷520).

Hydraulic support system for ramps while loading.

PVC toolbox. Hydraulic parking stand.

Steering adjuster. Automatic brake regulator.

Industrial lashing hooks. Aluminium side underride bars.

Rear panels and reflective side stripes.

Lateral lights. Oversized industrial rims.

Wheel nut coverings. Ramps activation lateral distributor.

Fixed drawbar. Self-adjusting levers. LED lights.

#### On demand:

Front bar for round bales. Front bar for bins.

Spare wheel with wheel-holder (only for twin tires).

Patented round bales tying system.

Ramps distance adjustment with hydraulic control.

Double ramps mm 750x2200+1200.

Aluminium hydraulic ramps mm 750x2500.

Aluminium double ramps mm 750x2650+950.

Grating ramps mmm 1200x2200.

Grating double ramps mm 1200x2000+1200.

Hydraulic winch.

#### UPN sides without edge.

Wooden surface on platform.

Hidden rings and hooks for fixing.

Steering drawbar with hydraulic command.

Height- adjustable self-supporting frame.

NEW: Hydraulic suspensions.

NEW: A.B.S. anti-lock braking system.

K80 bolted towing hitch. 40 mm bolted towing hitch.



# platoform

## 3 axles close

**ZAM 270 P03B 98**  
equipped with wooden surface on platform



**NEW**  
Hydraulic suspensions

**NEW**  
A.B.S. anti-lock braking system

#### STANDARD COLOURS MONOCOLOUR

- RED ZACCARIA
- GREEN ZACCARIA
- GREEN JD ● BLUE NH
- BLACK ● GRAY IC246

#### OPTIONALS

- METALLIC PAINT
- ON DEMAND COLOURS

| MODEL           | DIMENSIONS<br>cm | N° OF<br>AXLES | BRAKE<br>SIZE                              | BRAKE<br>SIZE<br>OPTIONAL                  | TARE<br>Tons | GROSS W.<br>Tons                       | PNEUMATICI<br>Standard           | FLOOR<br>HEIGHT | TIRES<br>ON DEMAND                                       | FLOOR<br>HEIGHT | SPEED<br>EU approved** | BRAKE     |
|-----------------|------------------|----------------|--|--|--------------|--|----------------------------------|-----------------|--|-----------------|------------------------|-----------|
| ZAM 270 P03B 70 | 700x255          | 3              | 300x160<br>10 studs<br>industrial<br>axles | 310x190<br>10 studs<br>industrial<br>axles | 5            | 27<br>+ vertical<br>load max<br>4 tons | 245/70 R17,5 twin<br>Pirelli new | 91 cm           | 435/50 R19,5<br>single new<br>445/45 R19,5<br>single new | 102 cm          |                        | Pneumatic |
| ZAM 270 P03B 85 | 850x255          | 3              |  |  | 5,6          |  |                                  |                 |  |                 |                        |           |
| ZAM 270 P03B 98 | 980x255          | 3              |  |  | 6            |  |                                  |                 |  |                 |                        |           |

\*\* If permitted by the EU State Traffic Laws.



# platforms 3 axles

## 3 AXLES PLATFORM WITH FRONTAL BEARING DISC

### Standard equipment:

- Self-steering rear axle. Fixed floor with rear slope.
- Hydraulic ramps mm. 750X2200.
- Adjustable ramps (int.ramps 950÷520).
- Hydraulic support system for ramps while loading.
- PVC toolbox. Hydraulic parking stand.
- Steering adjuster. Automatic brake regulator.
- Industrial lashing hooks. Aluminium side underride bars.
- Rear panels and reflective side stripes.
- Lateral lights. Oversized industrial rims.
- Wheel nut coverings. Ramps activation lateral distributor.
- Fixed drawbar. Self-adjusting levers. LED lights.

### Optionals:

- Front bar for round bales.
- Front bar for bins.
- Spare wheel with wheel-holder (only for twin tires).
- Patented round bales tying system.
- Round bales support poles.
- Ramps distance adjustment with hydraulic control.
- Double ramps mm 750x2200+1200.

### Aluminium hydraulic ramps 750x2500.

### Aluminium double ramps 750x2650+950.

Grating ramps mmm 1200x2200.

Grating double ramps mm 1200x2000+1200.

### UPN sides without edge.

- Hydraulic winch.
- LED lights.



Equipped with round bales support poles.

## ZAM 200 P MAXI



### STANDARD COLOURS MONOCOLOUR

- RED ZACCARIA
- GREEN ZACCARIA
- GREEN JD
- BLACK
- BLUE NH
- GRAY IC246

### OPTIONALS

- METALLIC PAINT
- ON DEMAND COLOURS

### APPROVED TIRES

215/75R17.5  
twin new  
L. 215 - H. 78



245/70R17.5  
twin new  
L. 245 - H. 80



445/45R19.5  
new  
L. 44.5 - H. 90



| MODEL           | DIMENSIONS<br>cm | N° OF<br>AXLES | BRAKE<br>SIZE                     | TARE<br>Tons | GROSS W.<br>Tons | TIRES                                  | FLOOR<br>HEIGHT | BRAKE     |
|-----------------|------------------|----------------|-----------------------------------|--------------|------------------|--|-----------------|-----------|
| ZAM 200 P       | 850x255          | 3              | 300x135<br>10 studs<br>industrial | 50           | 200              | 215/75 R17.5 twin<br>new               | 92              | Pneumatic |
| ZAM 200 I       | 850x255          | 3              |                                   | 50           | 200              | On demand:<br>245/70 R17.5 twin<br>new | 94              | Hydraulic |
| ZAM 200 P MAX I | 1020x255         | 3              |                                   | 57           | 200              |  |                 | Pneumatic |
| ZAM 200 I MAXI  | 1020x255         | 3              |                                   | 57           | 200              | 445/45R 19.5<br>single new             | 106             | Hydraulic |

### 3 AXLES PLATFORMS

#### Standard equipment:

#### Self-steering rear axle.

#### Parabolic leaf spring suspensions.

Fixed floor with rear slope.

Hydraulic ramps mm. 750X2200.

Adjustable ramps (int.ramps 950÷520).

Hydraulic support system for ramps while loading.

PVC toolbox.

Steering adjuster. Automatic brake regulator.

Industrial lashing hooks.

Rear panels and reflective side stripes.

Lateral lights. Oversized industrial rims.

Wheel nut coverings. Ramps activation lateral distributor.

Fixed drawbar.

Self-adjusting levers.

LED lights.

#### On ZAM 240 EXTRALONG model:

#### Extendable drawbar with hydraulic command.

#### On demand:

Front bar for round bales. Front bar for bins.

Spare wheel with wheel-holder (only for twin tires).

Patented round bales tying system with central pole.

Round bales support poles.

Ramps distance adjustment with hydraulic control.

Double ramps mm 750x2200+1200.

Aluminium hydraulic ramps mm 750x2500.

Aluminium double ramps mm 750x2650+950.

Grating ramps 750x2500.

Grating double ramps mm 1200x2000+1200.

Hydraulic winch.

#### UPN sides without edge.

Hidden rings and hooks for fixing.

#### Height-adjustable self-regulating frame.

#### NEW: Hydraulic suspensions.



# platforms

## 3 axles



**ZAM 240 P 12A MAXI**  
equipped with patented  
Round bales tying system

#### STANDARD COLOURS MONOCOLOUR

● RED ZACCARIA

● GREEN ZACCARIA

● GREEN JD ● BLUE NH

● BLACK ● GRAY IC246

#### OPTIONALS

● METALLIC PAINT

● ON DEMAND COLOURS

| MODEL                     | DIMENSIONS<br>cm | N° OF<br>AXLES | BRAKE<br>SIZE   | TARE<br>Tons | GROSS W.<br>Tons | TIRES<br>Standard                | FLOOR<br>HEIGHT | TIRES<br>ON DEMAND | FLOOR<br>HEIGHT | SPEED      | BRAKE     |
|---------------------------|------------------|----------------|---|--------------|------------------|----------------------------------|-----------------|--------------------|-----------------|------------|-----------|
| ZAM 240 P12A              | 850x255          | 3              | front 300x160<br>rear 300x135<br><br>10 studs<br>industrial axles | 5,9          | 24               | 215/75 R17,5<br>twin Pirelli new | 94 cm           | 245/70 R17,5 twin  | 98 cm           | 40<br>Km/h | Pneumatic |
| ZAM 240 P12A<br>MAXI      | 1020x255         | 3              |   | 6,4          | 24               |                                  |                 |                    |                 |            |           |
| ZAM 240 P12A<br>EXTRALONG | 1075x255         | 3              |   | 6,7          | 24               |                                  |                 |                    |                 |            |           |



# platforms 3 axles

OMOLOGATI MOTHER REGULATION  
**24**  
TONS



**ZAM 240 P12B MAXI**  
equipped with double ramps and  
patented round bales tying system

## STANDARD COLOURS MONOCOLOUR

- RED ZACCARIA
- GREEN ZACCARIA
- GREEN JD ● BLUE NH
- BLACK ● GRAY IC246

## OPTIONALS

- METALLIC PAINT
- ON DEMAND COLOURS

## NEW

Hydraulic suspensions

## NEW

**A.B.S.** anti-lock braking system

## 3 AXLES PLATFORMS

**Standard equipment:**  
Self-steering rear axle.

Parabolic leaf spring suspensions.

Oversized structure for special loads.

Fixed floor with rear slope.

Hydraulic ramps mm. 750X2200.

Adjustable ramps (int.ramps 950÷520).

Hydraulic support system for ramps while loading.

PVC toolbox. Steering adjuster.

Automatic brake regulator. Industrial lashing hooks.

Rear panels and reflective side stripes.

Lateral lights. Oversized industrial rims.

Wheel nut coverings.

Ramps activation lateral distributor.

Fixed drawbar. Self-adjusting levers.

LED lights.

**On ZAM 240 EXTRALONG model:**

**Extendable drawbar with hydraulic command.**

**On demand:**

Front bar for round bales. Front bar for bins.

Spare wheel with wheel-holder (only for twin tires).

Patented round bales tying system with central pole.

Round bales support poles.

Ramps distance adjustment with hydraulic control.

Double ramps mm 750x2200+1200.

**Aluminium hydraulic ramps mm 750x2500.**

**Aluminium double ramps mm 750x2650+950.**

Grating ramps 750x2500.

Grating double ramps mm 1200x2000+1200.

Hydraulic winch.

**UPN sides without edge.**


Wooden surface on platform.

Hidden rings and hooks for fixing.

**Height-adjustable self-supporting frame.**

**NEW: Hydraulic suspensions.**

**NEW: A.B.S. anti-lock braking system.**

| MODEL                     | DIMENSIONS<br>cm | N° OF<br>AXLES | BRAKE SIZE  | BRAKE<br>SIZE<br>OPTIONAL               | TARE<br>Tons | GROSS W.<br>Max Tons | TIRES<br>STANDARD                               | FLOOR<br>HEIGHT | TIRES<br>ON DEMAND                | FLOOR<br>HEIGHT | SPEED<br>EU approved**  | BRAKE     |
|---------------------------|------------------|----------------|---|---|--------------|----------------------|---|-----------------|-----------------------------------|-----------------|---|-----------|
| ZAM 240 P12B              | 850x255          | 3              | front 300x160<br>rear 300x160<br><br>10 studs<br>industrial axles | 310x190<br>10 studs<br>industrial axles | 5,9          | 24                   | 215/75 R17,5<br>twin Pirelli new<br>(Tons 23,8) | 94 cm           | 245/70 R17,5<br>twin<br>(Tons 24) | 98 cm           |  | Pneumatic |
| ZAM 240 P12B<br>MAXI      | 1020x255         | 3              |   |   | 6,4          | 24                   |   |                 |                                   |                 |   |           |
| ZAM 240 P12B<br>EXTRALONG | 1075x255         | 3              |   |   | 6,7          | 24                   |   |                 |                                   |                 |   |           |

\*\* If permitted by the EU State Traffic Laws.



## 4 AXLES PLATFORMS

### Standard equipment:

**Self-steering second and fourth axles.**

**Parabolic leaf spring suspensions.**

Fixed floor with rear slope.

Hydraulic ramps mm. 750X2200.

Adjustable ramps (int.ramps 950÷520).

Hydraulic support system for ramps while loading.

PVC toolbox. Steering adjuster.

Automatic brake regulator. Industrial lashing hooks.

Rear panels and reflective side stripes.

Lateral lights. Oversized industrial rims.

Wheel nut coverings.

Ramps activation lateral distributor.

Fixed drawbar. Self-adjusting levers.

LED lights.

### On demand:

Front bar for round bales. Front bar for bins.

Spare wheel with wheel-holder (only for twin tires).

Patented round bales tying system. Round bales support poles.

Ramps distance adjustment with hydraulic control.

Double ramps mm 750x2200+1200.

**Aluminium hydraulic ramps mm 750x2500.**

**Aluminium double ramps mm 750x2650+950.**

Grating ramps 750x2500.

Grating double ramps mm 1200x2000+1200.

Hydraulic winch.

Metal sheet top on the rear slope.

**UPN sides without edge.**

Wooden surface on platform.

Hidden rings and hooks for fixing.

**Height-adjustable self-supporting frame.**

**NEW: Hydraulic suspensions.**

**NEW: A.B.S. anti-lock braking system.**



**On ZAM 320 P13B EXTRALONG model:  
extendable drawbar with hydraulic command.**

# platforms

**4 axles**  
single front axle

**ZAM 320 P13B MAXI**



**NEW**

**Hydraulic suspensions**

**NEW**

**A.B.S.** anti-lock braking system

### STANDARD COLOURS MONOCOLOUR

● RED ZACCARIA

● GREEN ZACCARIA


● GREEN JD ● BLUE NH

● BLACK ● GRAY IC246

### OPTIONALS

● METALLIC PAINT

● ON DEMAND COLOURS

| MODEL                     | DIMENSIONS<br>cm | N° OF<br>AXLES | BRAKE<br>SIZE                              | BRAKE<br>SIZE<br>OPTIONAL                  | TARE<br>Tons | GROSS W.<br>Max Tons | TIRES<br>Standard                               | FLOOR<br>HEIGHT | TIRES<br>On demand  | FLOOR<br>HEIGHT | SPEED<br>EU approved**  | BRAKE     |
|---------------------------|------------------|----------------|--|--|--------------|----------------------|---|-----------------|---|-----------------|---|-----------|
| ZAM 280 P13B              | 850x255          | 4              | 300x160<br>10 studs<br>industrial<br>axles | 310x190<br>10 studs<br>industrial<br>axles | 7,5          | 28                   | 215/75 R17,5<br>twin Pirelli new                | 94 cm           | 235/70 R17,5 Gem<br>245/70 R17,5 Gem<br>(Q.li 320)<br><br>445/45 - 19-5 singoli | 98 cm           |  | Pneumatic |
| ZAM 320 P13B<br>MAXI      | 1020x255         | 4              |  |  | 7,7          | 32                   | 215/75 R17,5<br>twin Pirelli new<br>(Tons 31,8) | 94 cm           |   | 98 cm           |   |           |
| ZAM 320 P13B<br>EXTRALONG | 1075x255         | 4              |  |  | 8            | 32                   |   |                 |   | 98 cm           |   |           |

\*\* If permitted by the EU State Traffic Laws.

# platforms

## 4 axles double front axles

OMOLOGATI MOTHER REGULATION  
**30 TONS**

OMOLOGATI MOTHER REGULATION  
**32 TONS**

**ZAM 320 P22B EXTRALONG**  
equipped with extendable drawbar with hydraulic command.



### STANDARD COLOURS MONOCOLOUR

- RED ZACCARIA
- GREEN ZACCARIA
- GREEN JD ● BLUE NH
- BLACK ● GRAY IC246

### OPTIONALS

- METALLIC PAINT
- ● ON DEMAND COLOURS

**NEW**  
**Hydraulic suspensions**

**NEW**  
**A.B.S.** anti-lock braking system

### 4 axles platforms Standard equipment: Self-steering fourth axle.


Parabolic leaf spring suspensions.  
Fixed floor with rear slope.  
Hydraulic ramps mm. 750X2200.  
Adjustable ramps (int.ramps 950÷520).  
Hydraulic support system for ramps while loading.  
PVC toolbox. Steering adjuster.  
Automatic brake regulator.  
Nr.12 industrial lashing hooks.  
Rear panels and reflective side stripes.  
Lateral lights. Oversized industrial rims.  
Aluminium sides underride bars. Wheel nut coverings.  
Ramps activation lateral distributor.  
Fixed drawbar. Self-adjusting levers.  
LED lights.

### On demand:

Front bar for round bales. Front bar for bins.  
Spare wheel with wheel-holder (only for twin tires).  
Patented round bales tying system. Round bales support poles.  
Ramps distance adjustment with hydraulic control.  
Double ramps mm 750x2200+1200.  
**Aluminium hydraulic ramps mm 750x2500.**  
**Aluminium double ramps mm 750x2650+950.**  
Grating ramps 750x2500.  
Grating double ramps mm 1200x2000+1200.  
Hydraulic winch.

### UPN sides without edge.

Wooden surface on platform.  
Hidden rings and hooks for fixing.  
**Height-adjustable self-supporting frame.**  
**NEW: Hydraulic suspensions.**  
**Novità: A.B.S. anti-lock braking system.**

| MODEL                     | DIMENSIONS<br>cm | N° OF<br>AXLES | BRAKE<br>SIZE                              | BRAKE<br>SIZE<br>OPTIONAL                  | TARE<br>Tons | GROSS W.<br>Tons | TIRES<br>STANDARD                         | FLOOR<br>HEIGHT | TIRES<br>ON DEMAND                        | FLOOR<br>HEIGHT | SPEED<br>EU approved**  | BRAKE     |
|---------------------------|------------------|----------------|--|--|--------------|------------------|---|-----------------|---|-----------------|---|-----------|
| ZAM 300 P22B              | 850x255          | 4              | 300x160<br>10 studs<br>industrial<br>axles | 310x190<br>10 studs<br>industrial<br>axles | 7,5          | 30               | front<br>215/75 R17,5 twin<br>Pirelli new | 94 cm           | front<br>245/70 R17,5 twin<br>Pirelli new | 98 cm           |  | Pneumatic |
| ZAM 320 P22B<br>MAXI      | 1020x255         | 4              |  |  | 7,7          | 32               | rear<br>245/70 R17,5 twin<br>Pirelli new  |                 | rear<br>245/70 R17,5 twin<br>Pirelli new  |                 |   |           |
| ZAM 320 P22B<br>EXTRALONG | 1075x255         | 4              |  |  | 8            | 32               | 245/70 R17,5 twin<br>Pirelli new          |                 | 245/70 R17,5 twin<br>Pirelli new          |                 |   |           |

\*\* If permitted by EU State Traffic Laws.





## Platforms Industrial usage

Oversized vehicle  
Floor height 13 mt.  
Load 40 Tons

## special trailers

Our Technical Office utilizes  
3D software to design customized  
“Big Trailers” equipments,  
operating machines  
and European or Italian  
approved special trailers.



ZAM 200 ARP Professional  
equipped with Zaccaria F8500 crane



ZAM 140 P Super  
set up for livestock transport



ZAM 200 ARP model with hydraulic traction

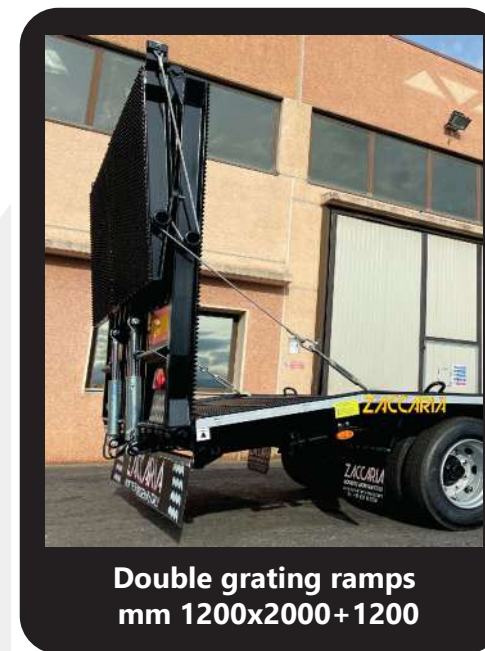


Platforms equipped with  
frame (various models available)  
and hydraulic ramps

**OPTIONAL :  
HYDRAULIC TRACTION**



# platforms



# platforms



Hydraulic winch



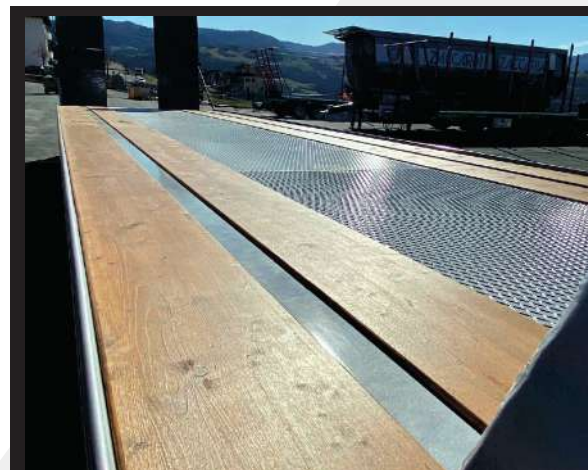
UPN sides without edge



K80 towing hitch



LED lights



Wooden surface for tracked metal machines



Bolted towing hitch

accessories



platforms



zaccariarimorchi.com

# ZACCARIA

QUALITY TRAILERS



## ZACCARIA SRL

Via Enrico Fermi, 350

I - 41055 Montese (Modena) - Italy

Tel. +39 (0)59 981750

Fax: +39 (0)59 982353

[www.zaccariarimorchi.com](http://www.zaccariarimorchi.com)

[info@zaccariarimorchi.com](mailto:info@zaccariarimorchi.com)



[www.facebook.com/zaccariarimorchi](https://www.facebook.com/zaccariarimorchi)



[www.linkedin.com/company/zaccaria-srl](https://www.linkedin.com/company/zaccaria-srl)



[www.youtube.com/zaccariatrailer](https://www.youtube.com/zaccariatrailer)



[www.instagram.com/zaccaria\\_rimorchi](https://www.instagram.com/zaccaria_rimorchi)

## Branches and Warehouses:

I - 41015 Nonantola (Modena)

Via Zuccola, 12 - Italy



scan the QR CODE

to see  
our VIDEOS

[zaccaria trailers youtube](https://www.youtube.com/zaccariatrailer)

